

A large outdoor stage set at sunset. The stage has a thatched roof and is illuminated by several bright stage lights. A person is standing on the stage, and a ladder is leaning against the structure. The background shows the ocean and a bright sunset sky.

COTI Productions

Production Electrician Services

Introduction
Pre-Production
On Site
On Site Extras
Post Production
Project List
Contact Information

Introduction

COTI Productions

Providing complete production electrician services.
Working professionally in theater and television since 1990, I now work freelance, bringing extensive experience in setting up and running:

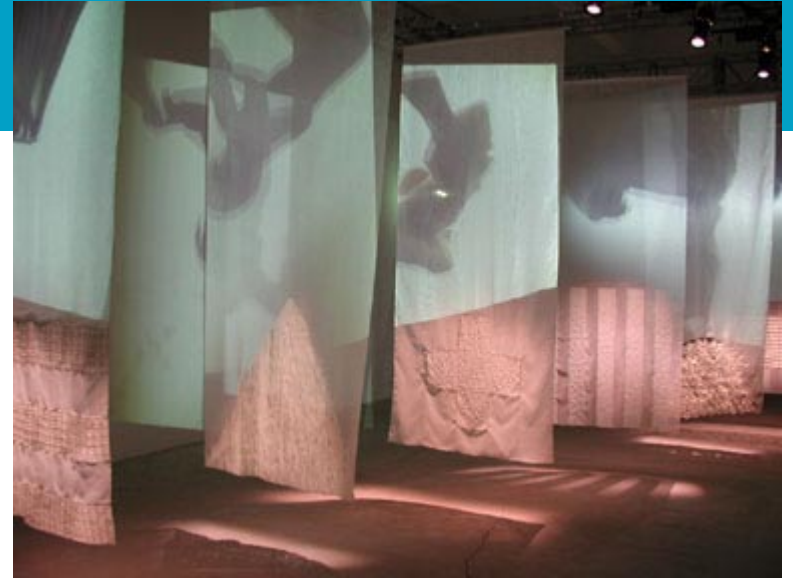
Large scale outside HMI sites
Studio shows, large and small
Episode Television
Special Events and Installations



Thunderbox



MSNBC Studio/DNC 2000



Ace Gallery, NYC

Design Experience and Electrician skills available for hire at any time during a project including short notice, last minute emergencies.

Conventional/Moving Light Systems

Solid cost and labor estimates to establish or fit in to any budget.

Using this File

Created with Adobe Acrobat, this is a pdf file and can be read using the free Acrobat reader from Adobe.

To ease in navigation there are Bookmarks and Links throughout the document, which can take you to specific content areas.

Pre-Production

Site Survey

Digital, high-resolution images of camera locations, sun positions, stage locations, power location, and other relevant information can be sent over the internet or printed for distribution to any interested parties.

Additionally, any special requirements of a site can be easily identified and planned for in the shop order.

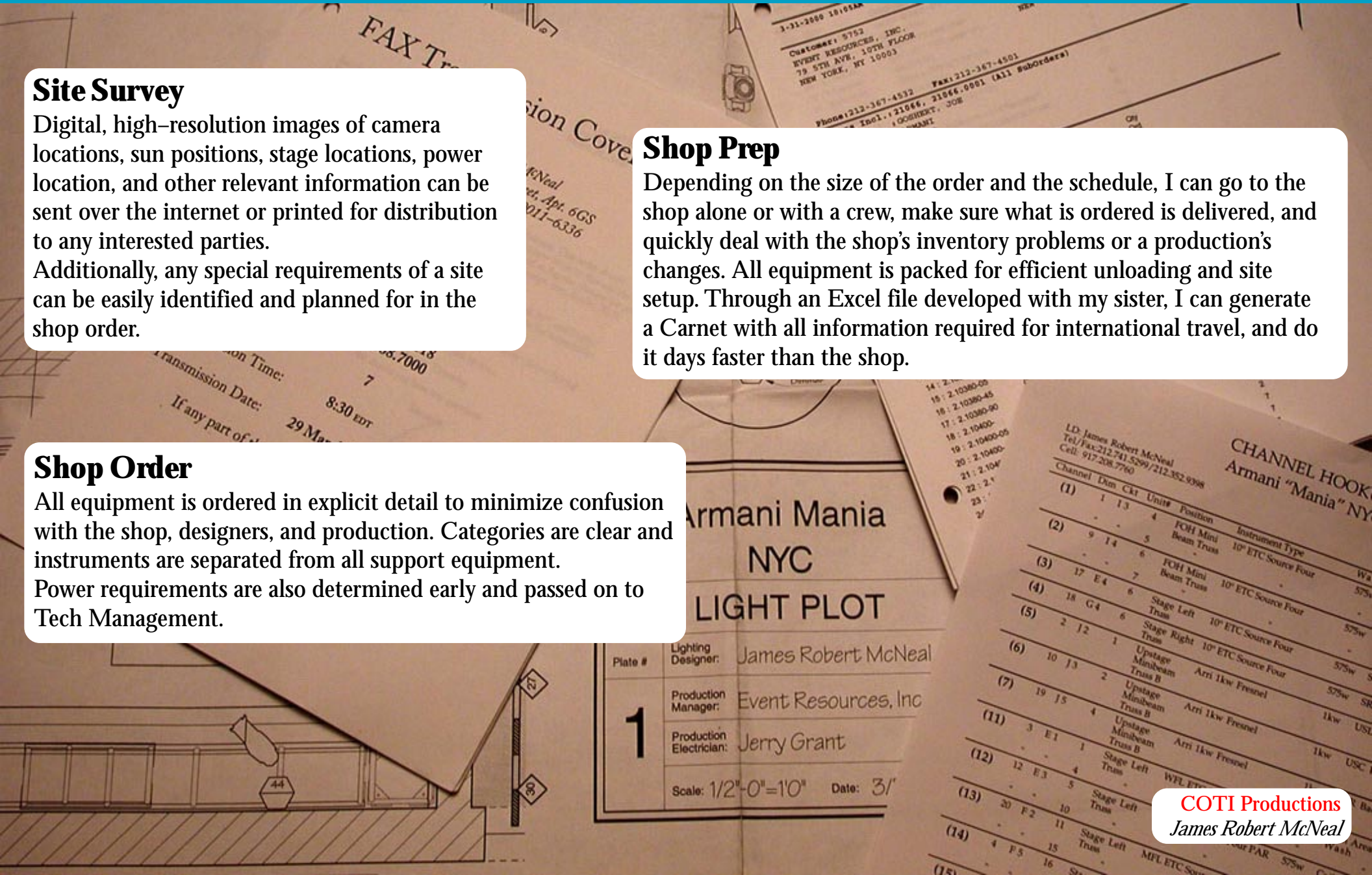
Shop Order

All equipment is ordered in explicit detail to minimize confusion with the shop, designers, and production. Categories are clear and instruments are separated from all support equipment.

Power requirements are also determined early and passed on to Tech Management.

Shop Prep

Depending on the size of the order and the schedule, I can go to the shop alone or with a crew, make sure what is ordered is delivered, and quickly deal with the shop's inventory problems or a production's changes. All equipment is packed for efficient unloading and site setup. Through an Excel file developed with my sister, I can generate a Carnet with all information required for international travel, and do it days faster than the shop.



On Site

I aim for low maintenance, low impact.
Lighting should not be responsible for delays during production.
All pre-production and on site work is geared with this in mind.

Safe distribution of electrical power throughout the entire site, including assistance with separation of lighting power, audio power, video power, and office circuits.



Say What Karaoke/CBS Grid

Safe rigging of electrical equipment overhead
Weights and distributed loads can easily be provided to the riggers.



NBA Draft, Minneapolis



Sunrise, Snowed In 2001

On Site Extras

Workbox

A large, rolling, locking steel case 66" x 60" x 30".

Manufactured by Knaack, it contains power tools, hand tools, electrical tools, small hardware items, extra gels and diffusion, tape, and storage space for extra lamps and perishables.

The Electrics department becomes more independent when building additional elements, and with this equipment, is capable of making almost all foreseeable repairs on location, saving a short notice PA trip when equipment is on site rather than at the hardware store.

My workbox is stored at Fourth Phase/Production Arts NJ for easy access when pulling equipment from that shop, and is designed to be wheeled or forklifted for transport.



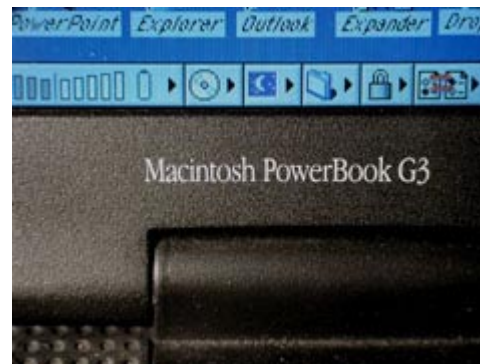
Computer & Office Support

I travel with a Mac PowerBook and support equipment and software to create or access almost any project, file, or image.

I own the latest versions of:

- Litewright
- Vectorworks
- File Maker Pro
- Microsoft Word
- Excel
- PowerPoint
- Adobe Photoshop
- Illustrator
- Pagemaker
- InDesign
- Acrobat

Access any file via any of the following interfaces:



- Ethernet
- Firewire
- USB
- SCSI
- Infrared
- Serial connections
- PC Cards
- Floppy disks in MAC or IBM format
- S-video and composite video output
- CD/RW burner

COTI Productions
James Robert McNeal

Post Production

Strike and return of equipment are the last steps in any project.

All items are counted and packed for return and easy resolution of disputes with the shop.

Faulty equipment is identified and unused lamps are marked for credit.

Other perishables are made available to production, and if necessary, a manifest can be generated for shipment.

I keep a copy of all paperwork and photographs for review at any time, and if requested I can create a report on the project as a whole as it relates to lighting and electrical power.



Truck Pack, Oprah in Paradise



Lighting Crew, Oprah in Paradise



AmEx Blue Crew, Load-out

Project List



As Gaffer

Backstreet Boys Over Broadway	11/00
Say What Karaoke @ CBS	10/00
U2 on the Roof	9/00
First Listen @ MTV Studios	9/00
TRL 500	9/00
Wanna Be a VJ 3: San Francisco, St. Louis, Spencer	4/00
TRL Superbowl	1/00
Isle of MTV, Bahamas	Summer '99
MTV Upfront @ Cipriani 42 nd Street	4/99
Walter Kaitz Foundation Benefit Dinner @ Hilton Hotel	9/98
MTV Summer Share, NJ (sub)	Summer 98
MTV Grind	8/97

As Best Boy

MTV Snowed In, Big Bear	1/01 & 1/00
MTV Spring Break, Cancun	3/01 & 3/00

MTV Network Shows

Fashionably Loud
Spankin' New Music
Say What Karaoke
Hip Hop Week
New Years Eve
Rock and Roll Hall of Fame Ceremony
VH-1 Fashion Awards Party
RuPaul

Other Gaffer Projects

Elmo's Magic Cookbook	9/00
Sesame Workshop	
Democratic National Convention NBC/MSNBC	8/00
Republican National Convention NBC/MSNBC	7- 8/00
Sesame English Children's Television Workshop	Fall 99
Oprah Winfrey Show, Bahamas	2/99
Windows on the World	1/99
Oprah Book Club Princeton, NJ (Toni Morrison)	1/99
International Emmy Awards	11/98 & 11/97
Oprah Winfrey Show, Manhattan Center	11/97
Celtic Christmas PBS,	9/97

As Best Boy

Thunderbox, Las Vegas, Lehigh University	10-11/00
NBA Draft, Minneapolis	6/00

Other Significant Projects

Armani "Mania" Lighting Designer	4/00
Forever Tango Tour, Head Carp.	9/97-1/98
Annie Get Your Gun, Props sub	1999
Jam on the Groove, Paris	1-2/97
Ainsley Harriot Show	12/99-1/00

Contact Information



COTI Productions

James Robert McNeal

Apt. 6G South

16 West 16th Street

New York, NY 10011-6335

212.741.5299 Home Phone

212.352.9398 Fax

917.208.7760 Mobile

mcneal@COTIproductions.com

www.COTIproductions.com

Rates negotiable depending on project and can be based on the hour, day, week, month, or project.

Member IATSE Local ACT